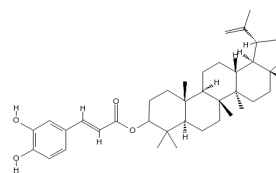


## PHYSICAL AND CHEMICAL PROPERTIES

<b>Product Name:</b>	Lupeol caffeate
<b>Catalog Number:</b>	BCN5855
<b>Cas No.:</b>	103917-26-6
<b>Formula:</b>	C39H56O4
<b>M.Wt:</b>	588.9
<b>Purity:</b>	>98%
<b>Physical Description:</b>	Powder
<b>Synonyms:</b>	N/A
<b>Chemical Name:</b>	[(1R,3aR,5aR,5bR,7aR,11aR,11bR,13aR,13bR)-3a,5a,5b,8,8,11a-hexamethyl-1-prop-1-en-2-yl-1,2,3,4,5,6,7,7a,9,10,11,11b,12,13,13a,13b-hexadecahydrocyclopenta[a]chrysen-9-yl] (E)-3-(3,4-dihydroxyphenyl)prop-2-enoate
<b>SMILES:</b>	<chem>CC(=C)C1CCC2(C1C3CCC4C5(CCC(C(C5CCC4(C3(CC2)C)C)(C)C)OC(=O)C=CC6=CC(=C(C=C6)O)O)C)C</chem>
<b>Solubility:</b>	N/A



biocrick.com

## STORAGE AND SHIPPING

<b>Storage:</b>	Store the product in sealed, cool and dry condition.
<b>General tips:</b>	For obtaining a higher solubility, please warm the tube at 37° and shake it in the ultrasonic bath for a while. Stock solution can be stored below -20° for several months.
<b>Shipping Condition:</b>	Ship with RT , or blue ice upon request

## INTENDED USE

1. Reference standards;
2. Pharmacological research;
3. Food research;
4. Synthetic precursor compounds;
5. Intermediates & Fine Chemicals;
6. Others.

## CAUTION!

**FOR RESEARCH PURPOSES ONLY.**

**NOT FOR HUMAN, VETERINARY DIAGNOSTIC OR THERAPEUTIC USE.**

*Specific storage and handling information for each product is indicated on the product datasheet. Most BioCrick products are stable under the recommended conditions. Products are sometimes shipped at a temperature that differs from the recommended storage temperature. Short-term storage of many products are stable in the short-term at temperatures that differ from that required for long-term storage. We ensure*

*that the product is shipped under conditions that will maintain the quality of the reagents. Upon receipt of the product, follow the storage recommendations on the product data sheet.*

---

F9-15, Building B2, Tianfu Life Science Park, 88 South Keyuan Road, Hi-Tech Zone, Chengdu, Sichuan 610041, PRC  
Tech Support: service@biocrick.com Tel: +86-28-8543-3893 FAX: +86-28-8543-3893