

## PHYSICAL AND CHEMICAL PROPERTIES

**Product Name:** Enhydrin chlorohydrin

**Catalog Number:** BCN4639

**Cas No.:** 38230-99-8

**Formula:** C<sub>23</sub>H<sub>29</sub>ClO<sub>10</sub>

**M.Wt:** 500.93

**Purity:** >98%

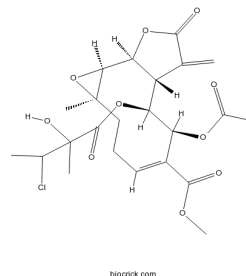
**Physical Description:** Powder

**Synonyms:** N/A

**Chemical Name:** methyl (1S,2S,4R,7E,9S,10S,11R)-9-acetyloxy-10-(3-chloro-2-hydroxy-2-methylbutanoyl)oxy-4-methyl-12-methylidene-13-oxo-3,14-dioxatricyclo[9.3.0.0<sup>2,4</sup>]tetradec-7-ene-8-carboxylate

**SMILES:** CC(C(C)(C(=O)OC1C2C(C3C(O3)(CCC=C(C1OC(=O)C)C(=O)OC)C)OC(=O)C2=C)O)Cl

**Solubility:** N/A



## STORAGE AND SHIPPING

**Storage:** Store the product in sealed, cool and dry condition.

**General tips:** For obtaining a higher solubility, please warm the tube at 37° and shake it in the ultrasonic bath for a while. Stock solution can be stored below -20° for several months.

**Shipping Condition:** Ship with RT , or blue ice upon request

## INTENDED USE

1. Reference standards;
2. Pharmacological research;
3. Food research;
4. Synthetic precursor compounds;
5. Intermediates & Fine Chemicals;
6. Others.

## CAUTION!

**FOR RESEARCH PURPOSES ONLY.**

**NOT FOR HUMAN, VETERINARY DIAGNOSTIC OR THERAPEUTIC USE.**

*Specific storage and handling information for each product is indicated on the product datasheet. Most BioCrick products are stable under the recommended conditions. Products are sometimes shipped at a temperature that differs from the recommended storage temperature. Short-term storage of many products are stable in the short-term at temperatures that differ from that required for long-term storage. We ensure that the product is shipped under conditions that will maintain the quality of the reagents. Upon receipt of the*

*product, follow the storage recommendations on the product data sheet.*

---

F9-15, Building B2, Tianfu Life Science Park, 88 South Keyuan Road, Hi-Tech Zone, Chengdu, Sichuan 610041, PRC  
Tech Support: service@biocrick.com Tel: +86-28-8543-3893 FAX: +86-28-8543-3893