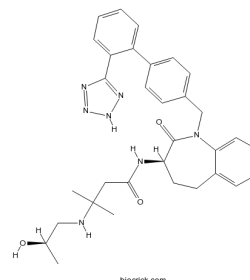


## PHYSICAL AND CHEMICAL PROPERTIES

<b>Product Name:</b>	L-692,585
<b>Catalog Number:</b>	BCC7305
<b>Cas No.:</b>	145455-35-2
<b>Formula:</b>	C32H37N7O3
<b>M.Wt:</b>	567.69
<b>Purity:</b>	>98%
<b>Physical Description:</b>	N/A
<b>Synonyms:</b>	N/A
<b>Chemical Name:</b>	3-[[[(2R)-2-hydroxypropyl]amino]-3-methyl-N-[(3R)-2-oxo-1-[[4-[2-(2H-tetrazol-5-yl)phenyl]phenyl]methyl]-4,5-dihydro-3H-1-benzazepin-3-yl]butanamid
<b>SMILES:</b>	<chem>CC(CNC(C)(C)CC(=O)NC1CCC2=CC=CC=C2N(C1=O)CC3=CC=C(C=C3)C4=CC=CC=C4C5=NNN=N5)O</chem>
<b>Solubility:</b>	Soluble to 100 mM in DMSO and to 25 mM in ethanol



## STORAGE AND SHIPPING

<b>Storage:</b>	Store the product in sealed, cool and dry condition.
<b>General tips:</b>	For obtaining a higher solubility, please warm the tube at 37° and shake it in the ultrasonic bath for a while. Stock solution can be stored below -20° for several months.
<b>Shipping Condition:</b>	Ship with RT , or blue ice upon request

## INTENDED USE

1. Reference standards;
2. Pharmacological research;
3. Food research;
4. Synthetic precursor compounds;
5. Intermediates & Fine Chemicals;
6. Others.

## CAUTION!

**FOR RESEARCH PURPOSES ONLY.**

**NOT FOR HUMAN, VETERINARY DIAGNOSTIC OR THERAPEUTIC USE.**

*Specific storage and handling information for each product is indicated on the product datasheet. Most BioCrick products are stable under the recommended conditions. Products are sometimes shipped at a temperature that differs from the recommended storage temperature. Short-term storage of many products are stable in the short-term at temperatures that differ from that required for long-term storage. We ensure that the product is shipped under conditions that will maintain the quality of the reagents. Upon receipt of the*

*product, follow the storage recommendations on the product data sheet.*

---

F9-15,Building B2, Tianfu Life Science Park,88 South Keyuan Road, Hi-Tech Zone,Chengdu,Sichuan 610041,PRC  
Tech Support:service@biocrick.com Tel:+86-28-8543-3893 FAX:+86-28-8543-3893