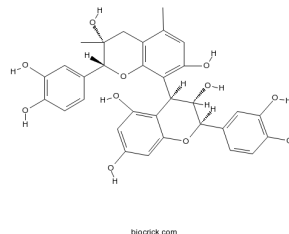


## PHYSICAL AND CHEMICAL PROPERTIES

<b>Product Name:</b>	Grape Seed Extract
<b>Catalog Number:</b>	BCC5317
<b>Cas No.:</b>	84929-27-1
<b>Formula:</b>	C32H30O11
<b>M.Wt:</b>	590.58
<b>Purity:</b>	>98%
<b>Physical Description:</b>	N/A
<b>Synonyms:</b>	N/A
<b>Chemical Name:</b>	(2R,3S,4S)-2-(3,4-dihydroxyphenyl)-4-[(2R,3R)-2-(3,4-dihydroxyphenyl)-3,7-dihydroxy-3,5-dimethyl-2,4-dihydrochromen-8-yl]-3,4-dihydro-2H-chromene-3,5,7-triol
<b>SMILES:</b>	<chem>CC1=CC(=C(C2=C1CC(C(O2)C3=CC(=C(C=C3)O)O)(C)O)C4C(C(OC5=C(C(=CC(=C45)O)O)C6=CC(=C(C=C6)O)O)O)O</chem>
<b>Solubility:</b>	Soluble in DMSO > 10 mM



## STORAGE AND SHIPPING

<b>Storage:</b>	Store the product in sealed, cool and dry condition.
<b>General tips:</b>	For obtaining a higher solubility, please warm the tube at 37° and shake it in the ultrasonic bath for a while. Stock solution can be stored below -20° for several months.
<b>Shipping Condition:</b>	Ship with RT , or blue ice upon request

## INTENDED USE

1. Reference standards;
2. Pharmacological research;
3. Food research;
4. Synthetic precursor compounds;
5. Intermediates & Fine Chemicals;
6. Others.

## CAUTION!

**FOR RESEARCH PURPOSES ONLY.**

**NOT FOR HUMAN, VETERINARY DIAGNOSTIC OR THERAPEUTIC USE.**

*Specific storage and handling information for each product is indicated on the product datasheet. Most BioCrick products are stable under the recommended conditions. Products are sometimes shipped at a temperature that differs from the recommended storage temperature. Short-term storage of many products are stable in the short-term at temperatures that differ from that required for long-term storage. We ensure that the product is shipped under conditions that will maintain the quality of the reagents. Upon receipt of the*

*product, follow the storage recommendations on the product data sheet.*

---

F9-15, Building B2, Tianfu Life Science Park, 88 South Keyuan Road, Hi-Tech Zone, Chengdu, Sichuan 610041, PRC  
Tech Support: service@biocrick.com Tel: +86-28-8543-3893 FAX: +86-28-8543-3893