

## PHYSICAL AND CHEMICAL PROPERTIES

**Product Name:** Z-VDVAD-FMK

**Catalog Number:** BCC1138

**Cas No.:** N/A

**Formula:** C32H46N5O11F

**M.Wt:** 695.73

**Purity:** >98%

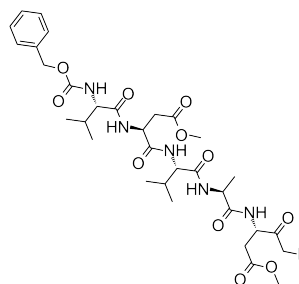
**Physical Description:** N/A

**Synonyms:** N/A

**Chemical Name:** methyl (3S)-5-fluoro-3-[[[(2S)-2-[[[(2S)-2-[[[(2S)-4-methoxy-2-[[[(2S)-3-methyl-2-(phenylmethoxycarbonylamino)butanoyl]amino]-4-oxobutanoyl]amino]-3-methylbutanoyl]amino]propanoyl]amino]-4-oxopentanoate

**SMILES:** CC(C)C(C(=O)NC(C)C(=O)NC(CC(=O)OC)C(=O)CF)NC(=O)C(CC(=O)OC)NC(=O)C(C(C)C)NC(=O)OCC1=CC=CC=C1

**Solubility:** Soluble in DMSO > 10 mM



## STORAGE AND SHIPPING

**Storage:** Store the product in sealed, cool and dry condition.

**General tips:** For obtaining a higher solubility, please warm the tube at 37° and shake it in the ultrasonic bath for a while. Stock solution can be stored below -20° for several months.

**Shipping Condition:** Ship with RT , or blue ice upon request

## INTENDED USE

1. Reference standards;
2. Pharmacological research;
3. Food research;
4. Synthetic precursor compounds;
5. Intermediates & Fine Chemicals;
6. Others.

## CAUTION!

**FOR RESEARCH PURPOSES ONLY.**

**NOT FOR HUMAN, VETERINARY DIAGNOSTIC OR THERAPEUTIC USE.**

*Specific storage and handling information for each product is indicated on the product datasheet. Most BioCrick products are stable under the recommended conditions. Products are sometimes shipped at a temperature that differs from the recommended storage temperature. Short-term storage of many products are stable in the short-term at temperatures that differ from that required for long-term storage. We ensure that the product is shipped under conditions that will maintain the quality of the reagents. Upon receipt of the*

*product, follow the storage recommendations on the product data sheet.*

---

F9-15, Building B2, Tianfu Life Science Park, 88 South Keyuan Road, Hi-Tech Zone, Chengdu, Sichuan 610041, PRC  
Tech Support: service@biocrick.com Tel: +86-28-8543-3893 FAX: +86-28-8543-3893