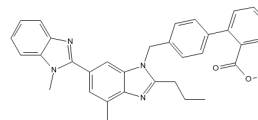


## PHYSICAL AND CHEMICAL PROPERTIES

<b>Product Name:</b>	Telmisattan
<b>Catalog Number:</b>	BCC3863
<b>Cas No.:</b>	144701-48-4
<b>Formula:</b>	C33H30N4O2
<b>M.Wt:</b>	514.62
<b>Purity:</b>	>98%
<b>Physical Description:</b>	N/A
<b>Synonyms:</b>	BIBR 277
<b>Chemical Name:</b>	2-[4-[[4-methyl-6-(1-methylbenzimidazol-2-yl)-2-propylbenzimidazol-1-yl]methyl]phenyl]benzoic acid
<b>SMILES:</b>	<chem>CCCC1=NC2=C(C=C(C=C2N1CC3=CC=C(C=C3)C4=CC=CC=C4C(=O)O)C5=NC6=CC=CC=C6N5C)C</chem>
<b>Solubility:</b>	DMSO : 6.67 mg/mL (12.96 mM; Need ultrasonic) H2O : < 0.1 mg/mL (insoluble)



bioocrick.com

## STORAGE AND SHIPPING

<b>Storage:</b>	Store the product in sealed, cool and dry condition.
<b>General tips:</b>	For obtaining a higher solubility, please warm the tube at 37° and shake it in the ultrasonic bath for a while. Stock solution can be stored below -20° for several months.
<b>Shipping Condition:</b>	Ship with RT , or blue ice upon request

## INTENDED USE

1. Reference standards;
2. Pharmacological research;
3. Food research;
4. Synthetic precursor compounds;
5. Intermediates & Fine Chemicals;
6. Others.

## CAUTION!

**FOR RESEARCH PURPOSES ONLY.**

**NOT FOR HUMAN, VETERINARY DIAGNOSTIC OR THERAPEUTIC USE.**

*Specific storage and handling information for each product is indicated on the product datasheet. Most BioCrick products are stable under the recommended conditions. Products are sometimes shipped at a temperature that differs from the recommended storage temperature. Short-term storage of many products are stable in the short-term at temperatures that differ from that required for long-term storage. We ensure that the product is shipped under conditions that will maintain the quality of the reagents. Upon receipt of the*

*product, follow the storage recommendations on the product data sheet.*

---

F9-15, Building B2, Tianfu Life Science Park, 88 South Keyuan Road, Hi-Tech Zone, Chengdu, Sichuan 610041, PRC  
Tech Support: service@biocrick.com Tel: +86-28-8543-3893 FAX: +86-28-8543-3893