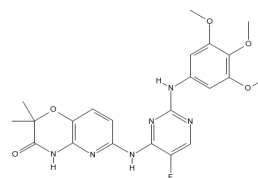


## PHYSICAL AND CHEMICAL PROPERTIES

<b>Product Name:</b>	R406 (free base)
<b>Catalog Number:</b>	BCC2553
<b>Cas No.:</b>	841290-80-0
<b>Formula:</b>	C22H23FN6O5
<b>M.Wt:</b>	470.4
<b>Purity:</b>	>98%
<b>Physical Description:</b>	N/A
<b>Synonyms:</b>	N/A
<b>Chemical Name:</b>	6-[[5-fluoro-2-(3,4,5-trimethoxyanilino)pyrimidin-4-yl]amino]-2,2-dimethyl-4H-pyrido[3,2-b][1,4]oxazin-3-one
<b>SMILES:</b>	<chem>CC1(C(=O)NC2=C(O1)C=CC(=N2)NC3=NC(=NC=C3F)NC4=CC(=C(C(=C4)OC)OC)OC)C</chem>
<b>Solubility:</b>	DMSO : ≥ 10 mg/mL (21.26 mM) *"≥" means soluble, but saturation unknown.



bioocrick.com

## STORAGE AND SHIPPING

<b>Storage:</b>	Store the product in sealed, cool and dry condition.
<b>General tips:</b>	For obtaining a higher solubility, please warm the tube at 37° and shake it in the ultrasonic bath for a while. Stock solution can be stored below -20° for several months.
<b>Shipping Condition:</b>	Ship with RT , or blue ice upon request

## INTENDED USE

1. Reference standards;
2. Pharmacological research;
3. Food research;
4. Synthetic precursor compounds;
5. Intermediates & Fine Chemicals;
6. Others.

## CAUTION!

**FOR RESEARCH PURPOSES ONLY.**

**NOT FOR HUMAN, VETERINARY DIAGNOSTIC OR THERAPEUTIC USE.**

*Specific storage and handling information for each product is indicated on the product datasheet. Most BioCrick products are stable under the recommended conditions. Products are sometimes shipped at a temperature that differs from the recommended storage temperature. Short-term storage of many products are stable in the short-term at temperatures that differ from that required for long-term storage. We ensure that the product is shipped under conditions that will maintain the quality of the reagents. Upon receipt of the*

*product, follow the storage recommendations on the product data sheet.*

---

F9-15, Building B2, Tianfu Life Science Park, 88 South Keyuan Road, Hi-Tech Zone, Chengdu, Sichuan 610041, PRC  
Tech Support: service@biocrick.com Tel: +86-28-8543-3893 FAX: +86-28-8543-3893